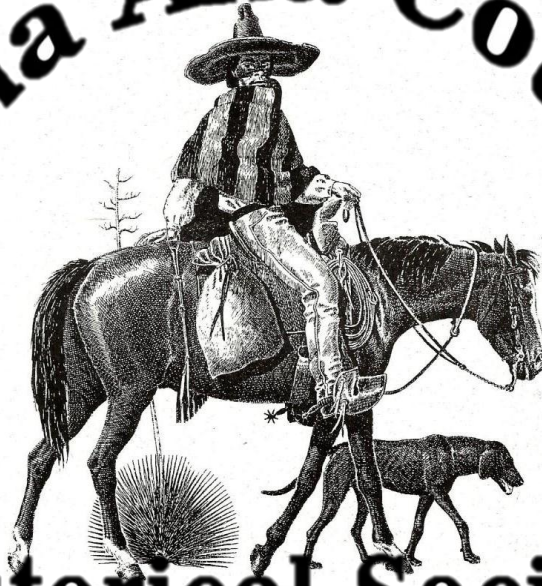


# Doña Ana County



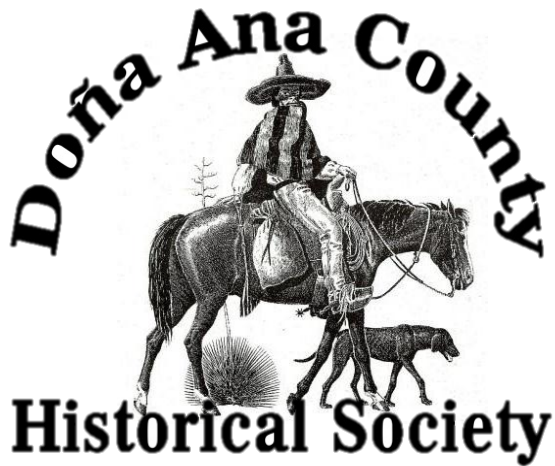
# Historical Society

46<sup>th</sup> Annual Banquet

Picacho Country Club, Las Cruces

Saturday, January 26, 2013





The Doña Ana County Historical Society was founded in 1963 to encourage and foster a better understanding of the County's far reaching history for future generations. Emphasizing research, education, and preservation, the society encourages a greater appreciation of New Mexico history, especially that of Doña Ana County.

### **Founding Members**

John Atshool, Betty Bowen, Helen Caffey, Laiten Camien, Martin Campbell, Ira Clark, Adlai Feather, Louis Freudenthal, Dorothy Mechem, Hugh Milton, Thomas Mitman, Helen Shomer, David Streeter, J. Paul Taylor, and Mark Thompson



46th Annual Banquet  
**Doña Ana County Historical Society**  
January 26, 2013

Luncheon

- Master of Ceremonies . . . . . Scott Green, Driver  
Butterfield Overland Stage
  
- Welcome . . . . . Marcie Palmer, President
- Introduction of Officers and Board Members
- Recognition of our Past Presidents . . . . . Susan Krueger, Vice President
  
- Butterfield Overland Trail . . . . . Gretchen Ward,  
National Park Service  
National Trails Intermountain Region

**Award Presentations**

- Property of Historical Significance,  
Endangered Historic Property, and  
Property Worthy of Preservation . . . . . Butterfield Trail
  
- Old Timer Award . . . . . Picacho Peak
- Heritage Award . . . . . George Hackler  
. . . . . Cal Traylor
  
- Hall of Fame . . . . . Sally Kading

**Doña Ana County Historical Society  
2013 Board**

Marcie Palmer - President  
Susan Krueger – Vice President  
George Helfrich - Past President  
Linda Galloway - Secretary  
Xandy Church - Treasurer  
Rebecca Slaughter – Historian

At-Large Board Members  
Martha Shipman Andrews, Jim Eckles,  
Doyle Piland, Buddy Ritter, Mary Kay Shannon, and Sara Wagner

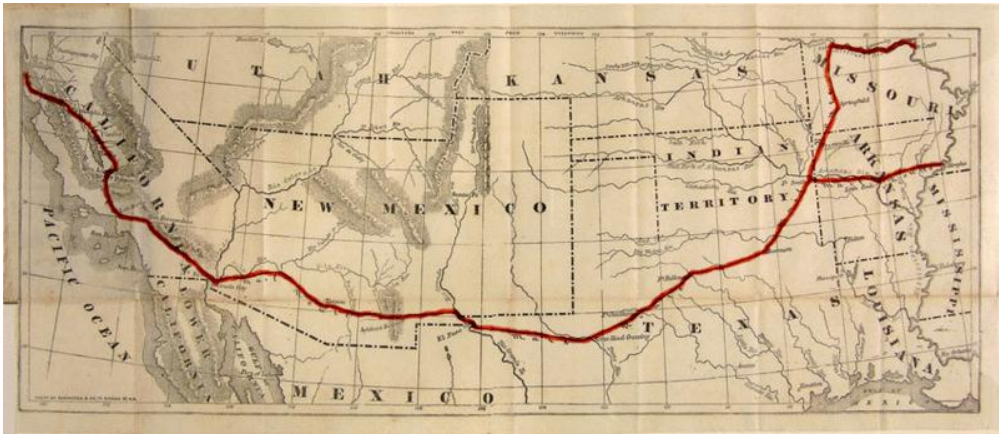
Committees  
Southern New Mexico Historical Review:  
Martha Shipman Andrews, Editor  
Liaison to City Museums: Stephanie Long  
Website: Mary Lou Pendergrass  
Newsletter: Doyle Piland, Editor  
Education/Scholarships: Jon Hunner  
Publicity: Jim Eckles  
Book Sales: Carl Eichstaedt, Sara Wagner

Awards: Susan Krueger, Stephanie Long, Marcie Palmer, Mary Lou  
Pendergrass, Rebecca Slaughter, and Mary Kay Shannon

## Our Past Presidents

*Louis E. Freudenthal	Oct 1963 – Nov 1964	1 <sup>st</sup>
*George Adlai Feather	Nov 1964 – Nov 1965	2 <sup>nd</sup>
J. Paul Taylor	Nov 1965 – Nov 1996 Feb 1977 – Mar 1979	3 <sup>rd</sup> 8 <sup>th</sup>
Charlotte K. Priestley	Nov 1966 – Jan 1969	4 <sup>th</sup>
Calvin L. Traylor	Jan 1969 – Feb 1971 1991 - 1993	5 <sup>th</sup> 14 <sup>th</sup>
*Louise Garrett	Feb 1971 – Fall 1974	6 <sup>th</sup>
*James McNeil	Fall 1974 – Feb 1977	7 <sup>th</sup>
*Opal Lee Priestley	Mar 1979 – April 1981	9 <sup>th</sup>
Austin Hoover	Apr 1981 – Oct 1983 Jan – Dec 2004	10 <sup>th</sup> 23 <sup>rd</sup>
*Christine Myers	Oct 1983 – Jan 1987	11 <sup>th</sup>
*James H. Powell	1987 – 1989	12 <sup>th</sup>
*Paxton Price	1989 – 1991	13 <sup>th</sup>
Linda G. Harris	1993 – 1995	15 <sup>th</sup>
Charles (Chuck) Miles	1995 – 1997	16 <sup>th</sup>
Clarence Fielder	1997	17 <sup>th</sup>
Eva Jane (Janie) Matson	1998	18 <sup>th</sup>
Roger Walker	1999	19 <sup>th</sup>
Beverly Pirtle	2000 – 2001	20 <sup>th</sup>
Robert L. (Bob) Hart	2002	21 <sup>st</sup>
*Donna Eichstaedt	2003 – 2005	22 <sup>nd</sup>
Charles (Chuck) Murrell	2005 – 2006	24 <sup>th</sup>
Roger Rotenmaier	2007 – Jun 2008	25 <sup>th</sup>
George Helfrich	Jul 2008 – 2009	26 <sup>th</sup>
George Hackler	2010 -2012	27 <sup>th</sup>

\* Deceased



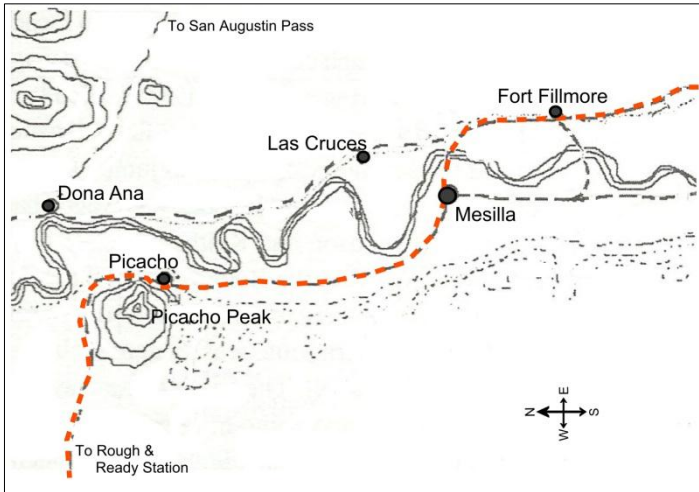
## The Butterfield Overland Trail

In 1857, the U.S. Congress contracted with John Butterfield to provide mail and passenger service, in 25 days or less, between St. Louis, Missouri to San Francisco, California. The contract stated that there would be two runs per week in each direction and there would be no exceptions for bad weather, breakdowns or hostile attacks.

Butterfield set a southern route to avoid harsh northern climates. Stations were established and spaced about 15 to 20 miles apart; water sources were secured; new roads were surveyed and old roads were improved. Supply bases and repair shops were set up. 1200 horses and 600 mules were procured and distributed along the route; contracts for hay and fodder were secured; coaches were built; and men were hired for a variety of tasks.



Society's Stage Coach on display at Farm & Ranch Heritage Museum



Route of the Butterfield Trail from Fort Fillmore around Picacho Peak in 1854, adapted from *The Butterfield Trail in New Mexico* by George Hackler.

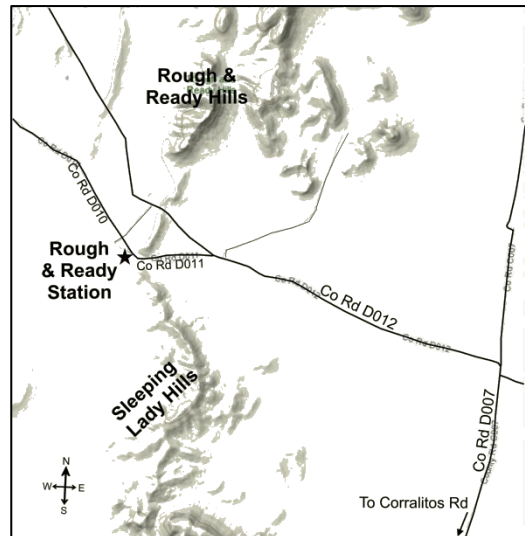
The first Butterfield mail coach left St. Louis on September 15, 1858 and arrived in San Francisco twenty-three days later. For two years, the Butterfield Trail connected the nation with regular mail delivery and passenger service. In 1861 as the country faced Civil War, operations ceased.

Company records, old maps, newspaper accounts journals, and diaries make it a

**Significant Historical Resource.** Time, the elements, and man have destroyed almost all evidence of the Trail making it an **Endangered Historic Resource.** The Dona Ana County Historical Society commends the efforts of the National Historic Trails program and concur that the Butterfield Overland Trail is indeed **Worthy of Preservation.**



Approx location of Picacho Station



Approx location of Rough & Ready Station

## Old Timers Award 2013: Picacho Peak



1935 Postcard



John Newberry at old Picacho Butterfield Stage Stop, ca. 1925



Picacho Peak today

The conspicuous cone of Picacho Peak has long been a geographic landmark. It rises to an elevation of 4,954 feet and is connected by low ridges to the Robledo Mountains seven miles to the north.

The old village of Picacho, located on the southeastern slope of the peak (the side facing Las Cruces), was established around 1854 by settlers from La Mesilla lead by Juan Evangelisto Chavez. In 1854, Col. Joseph Mansfield included a hand-drawn map of the Mesilla Valley in his report on the condition of the Western Forts. It shows Picacho Peak and the military road. The road left Mesilla, stayed west of the Rio Grande, and passed through Picacho. The trail then traveled north, passing Picacho Peak on the east side before turning west through Box Canyon.

This is the route that the Butterfield Overland Mail Line followed. The Picacho relay station operated from 1857 to 1861. Here the horses were changed for mules for the arduous trip west past Cooke's Peak. The last remains of the stage stop in Picacho were torn down in 1954.

Today a major thoroughfare, two schools, a gun club, a water association, a country club and golf course, residential development, and a BLM recreation area are all named for the prominent cone north west of Las Cruces. Picacho Peak is truly a cherished feature and an old time landmark in Doña Ana County



*Recent Recipients:*

- 2004 Pecan Industry
- 2005 Gadsden Museum
- 2006 Rock Walls of Las Cruces
- 2007 Jardin de Mesquite Gateway
- 2008 Seed House & Story Tree
- 2009 Green Bridge
- 2010 Cotton Gins
- 2010 Olin Calk Roadrunner
- 2011 The City Hall Lions

**Old Timers Award:**

The Old Timer's Award identifies a cherished object, natural phenomena or cultural tradition prominent in Mesilla Valley Heritage that deserves public attention and that might otherwise escape recognition as an important part of the character of this region.

**The Heritage Award:**

The Heritage Award was "established to be given to a person or persons whose actions or deeds have contributed to the historical or cultural heritage of Doña Ana County and who is (are) not an avocational or professional historian."

*Recent Recipients:*

- 2004 Jose Tena
- 2005 Veterans' Wall researchers
- 2006 Irene Oliver Lewis & Sylvia Camunez
- 2007 Amador Museum Foundation
- 2008 LesLee Alexander
- 2009 Anthony Pennock
- 2010 Col. Gerald P. Schurtz (Ret.)
- 2011 Keith Humphries

Information on all of our awards and previous recipients has been posted to the Historical Society web site.

## Heritage Award 2013:

### George Hackler



Las Cruces native, George Hackler, graduated from New Mexico State University with a double major in physics and mathematics. His career included rocket flight determination, heavy construction, and design and construction of rocket propulsion test facilities.

His interest in southwest history began at a very early age. His grandfather, Riburn Hackler was a Tennessee railroad engineer who wanted to be a cowboy and gave up a secure job to come west to Las Cruces in 1922. He cleared a farm out of the rough gravel hills on the west side of the river below Hatch. There was an Indian camp site and burial ground above the farm on a bluff

overlooking the river. As a child George spent endless hours at the farm searching for arrow points and potsherds, trying to visualize the lives and times of the people buried there. His other grandfather, George Cross also came to the valley in 1922 where he worked on a steam driven dragline bigger than the boarding house he lived in. George learned to harness and work draft horses and mules from both grandfathers. During his stays on the farms and ranches he learned what happens to a wagon when the team is turned too short and when a contrary mule steps over the tongue and tangles the traces.

Author of *The Butterfield Trail in New Mexico*, George is an authority on the trail. He has visited and documented the sixteen sites in New Mexico and coordinated modern surveys in respect to those made by historians in the 1930s. The Pasajero del Camino Real Award was presented to George in 2006 for his book. It quickly went out of print and became highly collectable. Due to demand, a second printing is now available from Amazon. George is a past president and a life member of the Doña Ana County Historical Society.

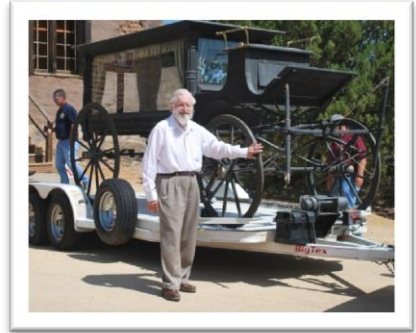
## Heritage Award 2013: Cal Traylor

Cal Traylor is a lifelong New Mexican and history buff with a particular fondness for information related to the murder of Pat Garrett. Twenty years ago he began a search to find the hearse that carried Garrett to this grave in 1908.

In 1894 the Women's Improvement Association purchased a hearse for Las Cruces. The new horse-drawn hearse sported glass windows, velvet curtains, and fancy carved molding on the corners. The hearse was in service until 1912. Traylor found the hearse in Piños Altos and after years of persistence finally purchased it in August 2012. He then donated it to the Doña Ana County Sheriff's Department for permanent installation in the Historical Museum of Lawmen, located inside the lobby of the department's headquarters at 845 N. Motel Blvd. in Las Cruces.

"It was simply misplaced at its former location," said Traylor, whose research concluded the Women's Improvement Association sold the hearse to local rancher Hal Cox, who converted it to a trailer before selling it to Grant County resident and antique collector Frank Tatsch in 1935. Tatsch later restored the hearse and placed in the Pinos Altos art museum. After Tatsch's death, his son sold the hearse to Traylor.

Traylor is a past president and life member of the Dona Ana County Historical Society. He was added to the Hall of Fame in 1987. He is now added to the recipients of the Heritage Award for his dedication in acquiring the WIA Hearse.



Cal Traylor with hearse that carried Pat Garrett



Volunteers move hearse into Lawmen Museum



## Doña Ana County Historical Society Hall of Fame

1964	Elizabeth Fountain Armendariz	1989	Lee & Christine Myers
1965	Herbert Watts Yeo	1990	Michael R. Taylor
1966	General Hugh M. Milton II	1991	Patrick Beckett
1967	Helen Pauline Caffey	1992	Louis Ray Sadler
1968	George Adlai Feather	1993	Bradley Blake
1969	Katherine Dougherty Stoes	1994	Jesse Scroggs
1970	Fabian Garcia	1995	Alice Wilbur Gruver
1971	William & Minnie Sutherland	1996	Gerald W. Thomas
1972	Hunter & Edith Lewis	1997	William P. Stevens
1973	Louis E. Freudenthal	1998	Archie Beckett
1974	Opal Lee Shore Priestly	1999	Austin Hoover
1975	Harriett Hanson McGuire	2000	Gordon Owen
1976	Edmund & Aileen Shannon	2001	Charles Miles
1977	The Day Sisters	2002	Karl Laumbach
1978	Keith Humphries	2003	Eva Jane Matson
1979	Ira G. Clark, Jr.	2004	Bob Pick
1980	Eva Pendleton Henderson	2005	George Helfrich
1981	Margaret Page Hood	2006	Jo Tice and John Porter Bloom
1982	The Cox Family	2007	Donna Eichstaedt
1983	Carmen Freudenthal	2008	Dr. Jon Hunner
1984	Mary D. and J. Paul Taylor	2009	Charlotte Ann Priestley
1985	Herman Weiner	2010	Marcie Palmer
1986	Ilka Feather Minter	2011	Allan Holmes
1987	Calvin Lee Taylor	2012	<i>not awarded</i>
1988	Leon Metz		

**Hall of Fame Award:** The Hall of Fame Award is designed to recognize individuals who are known for their exceptional contributions to the preservation of the history and culture of the Mesilla Valley. The contribution should be of a substantial nature and be evidenced by enduring and observable worth to the Doña Ana Historical Society and the community at large.

## Hall of Fame 2013:

### Sally Kading

For many years, Sally Kading has been volunteering at Thomas Branigan Memorial Library providing expert assistance in genealogy research. The library has copies of some church records from San Albino and St. Genevieve that had been partially transcribed and typed. Looking through the material, Kading immediately saw the value, but knew that more was needed. The data needed to be extracted and put into some format that researchers could readily use.



To accomplish this Kading organized a group of volunteers to translate and transcribe church records of marriages, baptisms and burials into a searchable database. Dubbed the “Mesilla Valley Pioneer Project,” the group is going beyond what was found in the library. To capture as many people as possible, Kading lead the group to include other churches, including the Methodist and Presbyterian records. After three years, Kading and her small group of dedicated volunteers have transcribed over 15,000 entries into a master file.

The project documents the lives of the men and women who came to the Mesilla Valley. Small villages, gone today, like Bosque Seco, Colorado, Nombre de Dios and Santa Barbara are mentioned and take their place in valley history. Deaths by Indians, drowning and murder are often noted. Also noted are the many deaths from illnesses such as diphtheria, distemper, tonsillitis, small pox and fever as well as childbirth. In many cases the marriage and baptismal records list, not only the name of the person receiving the sacrament, but also the names of parents, grandparents and witnesses at these events.

Far beyond the genealogical information, Kading sees patterns that show villages fading away, the impact of Civil War soldiers marrying into Hispanic families, and the changes brought by the railroad. This gold mine of information will be made available to anyone doing research on the Southwest.

It only takes one person to make great things happen and Sally Kading is doing it right before our eyes. For this reason she rightfully takes her place in the Doña Ana County Historical Society Hall of Fame.

## Special Thanks

**Martha Shipman Andrews** for her hard work on the *Southern New Mexico Historical Review*.

**George Helfrich** for his many years of devotion to DACHS from being a charter member, then board member, president and now serving in the role of past president.

**Mary Lou Pendergrass** for keeping the beautiful DACHS website up and running.

**Doyle Piland** for his dedication to producing great newsletters.

**Corporate Sponsors** for their generous contributions to further the work of the Doña Ana County Historical Society.

### Corporate Sponsors:

#### **Double Eagle Restaurant & Peppers Cafe**

On The Mesilla Plaza  
C. W. Buddy Ritter, Owner

#### **Insta-copy Imaging**

Main Street Las Cruces Downtown  
Parry & Diana Lyon, Owners

#### **Hester Allstate Agencies**

Las Cruces. Roswell. Hobbs. Carlsbad  
Ricky Hester, Owner

#### **White Sands Federal Credit Union**

Las Cruces, T or C, White Sands Missile Range, El Paso  
William Jacobs, President & CEO

## Special Thanks

We also want to thank the sponsors of  
***Southern New Mexico Historical Review***



Glennis Adam and

Martin Ditmore

Burton and Ann Berkson

Carl Eichstaedt

Bob and Cheryl Gamboa

Roberta Haldane

Ken and Nancy Hall

John Hawley

George and Alice Helfrich

Walter Hines

James and Annabelle Hurst

Susan Krueger

Gordon Owen

Marcie Palmer

Frank and Priscilla Parrish

Doyle and Letisha Piland

Bob and Pam Pick

Teresa Powell

Gerald and David Thomas

Beverly and Hal Wetter

and to the individuals who contributed to the production of

***Sagebrush and Sand Dunes***  
***An Anthology of Southern New Mexico History***

Martha Andrews Shipman and Rick Hendricks, co-editors

Dean Wilkey and staff at

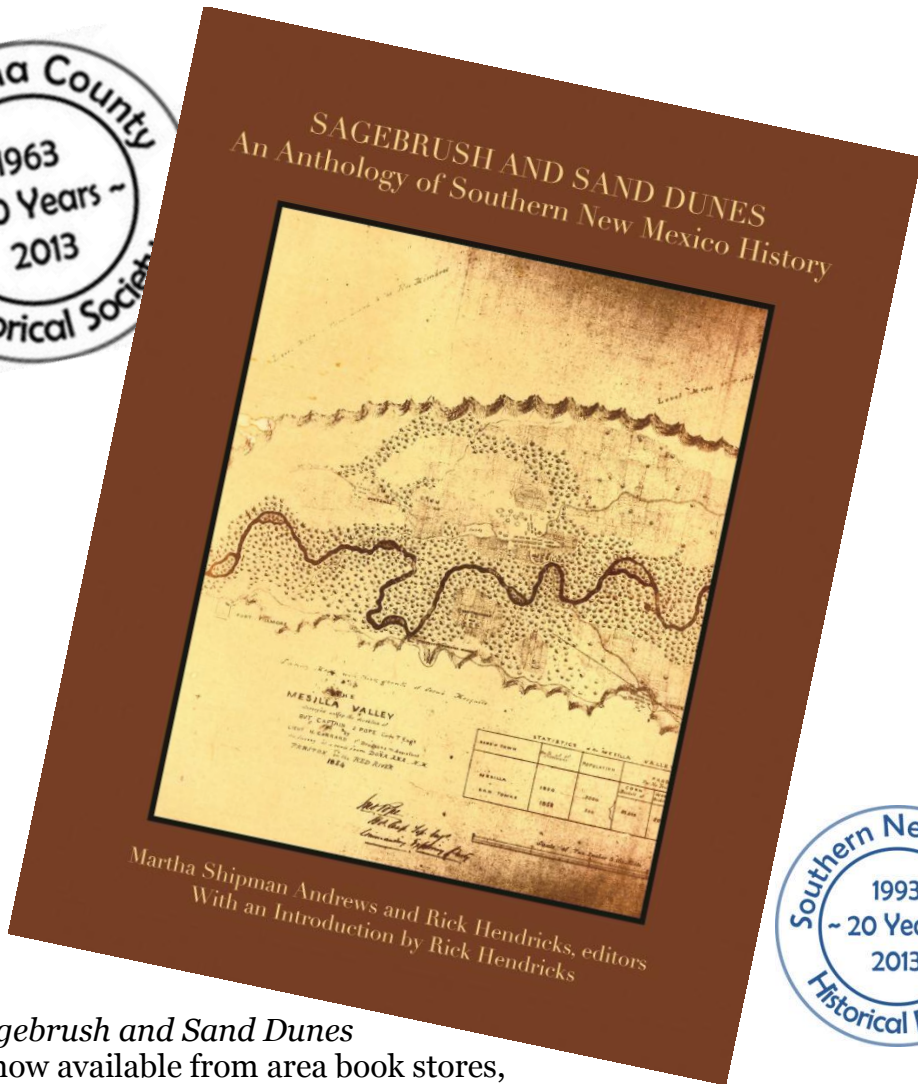
NMSU Archives and Special Collections

Kristopher Laumbach

Bonnie Coleman Iapoce

Jim Eckles





*Sagebrush and Sand Dunes*  
is now available from area book stores,  
on line, and at meetings of the Historical Society

Doña Ana County Historical Society  
Box 16045  
Las Cruces, NM 88004  
[www.DonaAnaCountyHistSoc.org](http://www.DonaAnaCountyHistSoc.org)